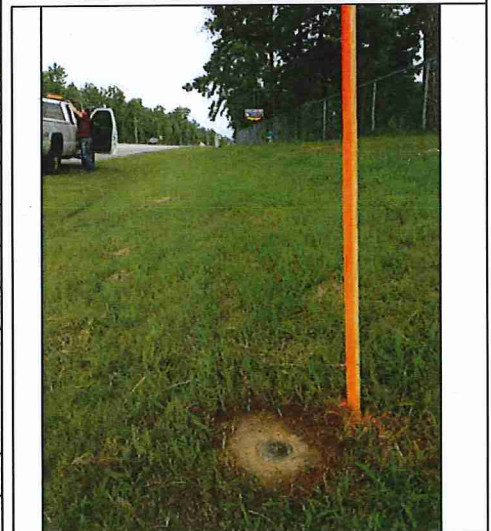
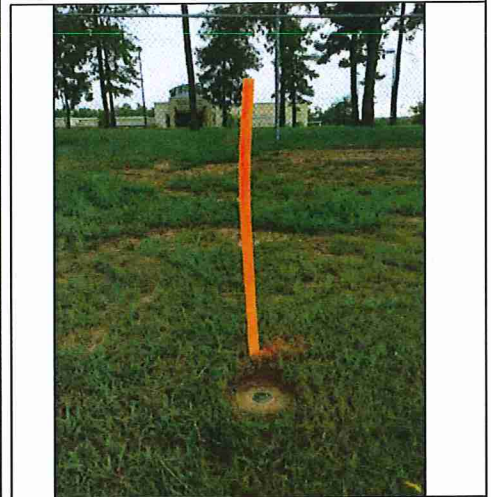
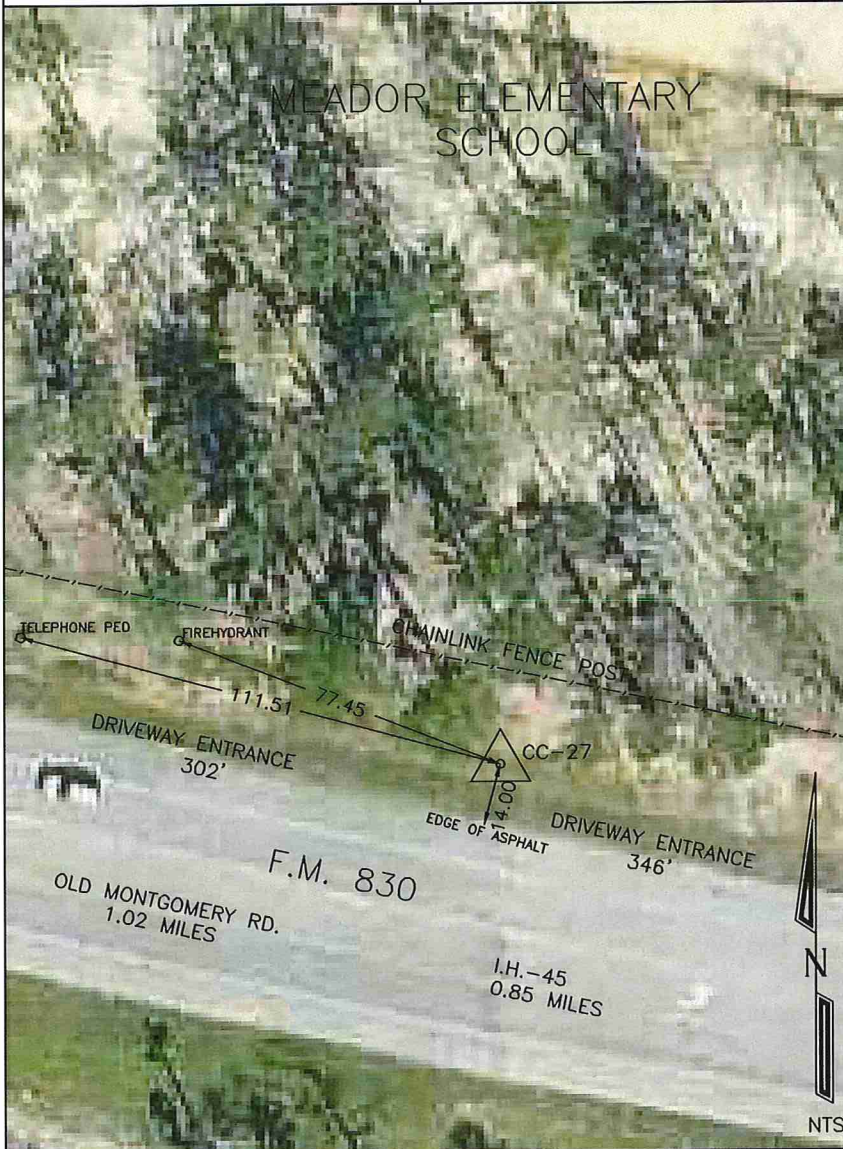




ENGINEERING
CITY OF CONROE

300 W. Davis P.O. Box 3066
Conroe, Texas 77305 (936) 522-3130



CC-27(SAN JAC 13)	COUNTY: MONTGOMERY
NORTHING	EASTING
GRID: 10139188.79	GRID: 3819804.00
SURFACE: 10139190.14	SURFACE: 3819803.65
SCALE FACTOR: 0.99993876	ELEVATION: 339.93
DATUMS: NAD83 (2011) CENTRAL/NAVD88-91	
DESCRIPTION: FOUND BRASS DISC IN CONCRETE ±1,400 FEET WEST OF ROLLING HILLS DRIVE ON NORTH SIDE OF FM 830, ±302 FEET EAST OF ENTRANCE TO MEADOR ELEMENTARY SCHOOL. (STAMPED: SAN JACINTO RIVER AUTHORITY "BM#13")	
DATE ESTABLISHED: 07-22-2014	



Benchmark No. 13

*Held For Rotation &
Scale Factor <*

General Location: ±1,400 feet west of Rolling Hills Drive on north side of FM 830, ±250 feet east of entrance to Meador Elementary School

Latitude: 30° 23' 29.13709"
Longitude: 95° 30' 02.09226"
Grid Northing: 10,139,188.82
Grid Easting: 3,819,804.03
Surface Northing: 10,139,566.62
Surface Easting: 3,819,946.36

Texas Coordinate System of 1983 (NAD83, CORS)
Central Zone (4203)

Elevation: 340.91 Project Datum

Mark Logo: San Jacinto River Authority
Set 3" Bronze Disk in Conc. Stamped "BM#13"

Project Datum is based on a call elevation of 212.00 at S.J.R.A. G.R.P. BM#5 being a 3" brass disk in conc. with a mark logo "City of Houston SJRA 1972" stamped "D-1 D-3" located at the Lake Conroe gauging station pier on the dam structure.

Combined Factor: 0.9999627395
Surface = Grid / Combined Factor

Units of Measure: U.S. Survey Foot

Detail Sketch:

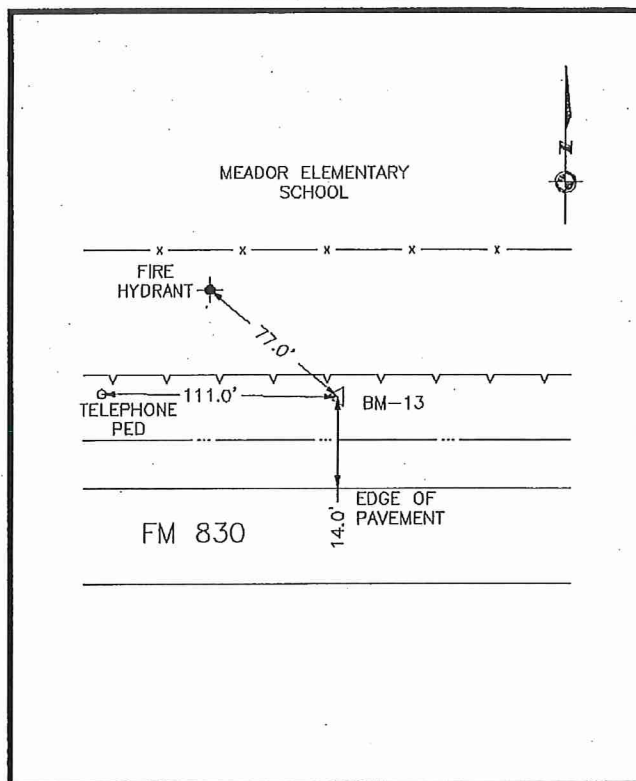


Photo 1-Station Detail:

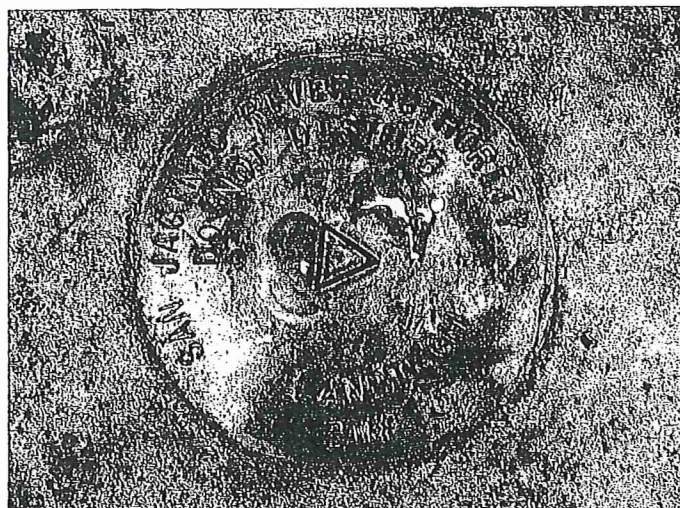
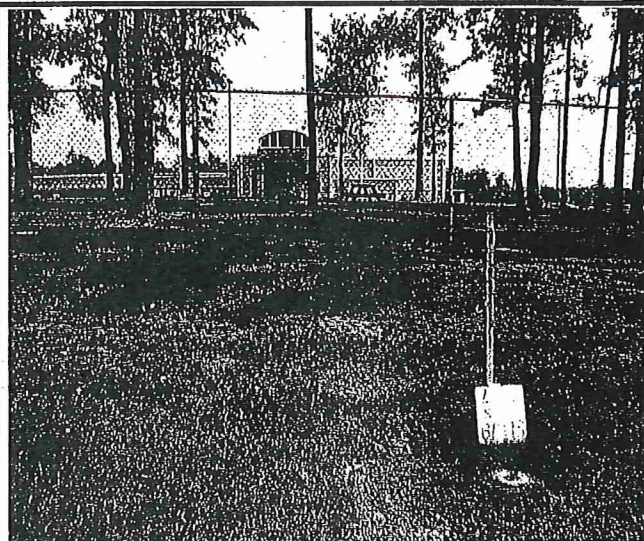


Photo 2-Station Area Picture:





Benchmark No. 13

*Held
For Horizontal*

General Location: ±1,400 feet west of Rolling Hills Drive on north side of FM 830, ±250 feet east of entrance to Meador Elementary School

Latitude:	30° 23' 29.13709"
Longitude:	95° 30' 02.09226"
Grid Northing:	10,139,188.82
Grid Easting:	3,819,804.03
Surface Northing:	10,139,566.62
Surface Easting:	3,819,946.36

*CC-27
0.03' x 0.03'*

Texas Coordinate System of 1983 (NAD83, CORS)
Central Zone (4203)

Elevation: 340.91 Project Datum

Mark Logo: San Jacinto River Authority
Set 3" Bronze Disk in Conc. Stamped "BM#13"

Project Datum is based on a call elevation of 212.00 at S.J.R.A. G.R.P. BM#5 being a 3" brass disk in conc. with a mark logo "City of Houston SJRA 1972" stamped "D-1 D-3" located at the Lake Conroe gauging station pier on the dam structure.

Combined Factor: 0.9999627395
Surface = Grid / Combined Factor

Units of Measure: U.S. Survey Foot

Detail Sketch:

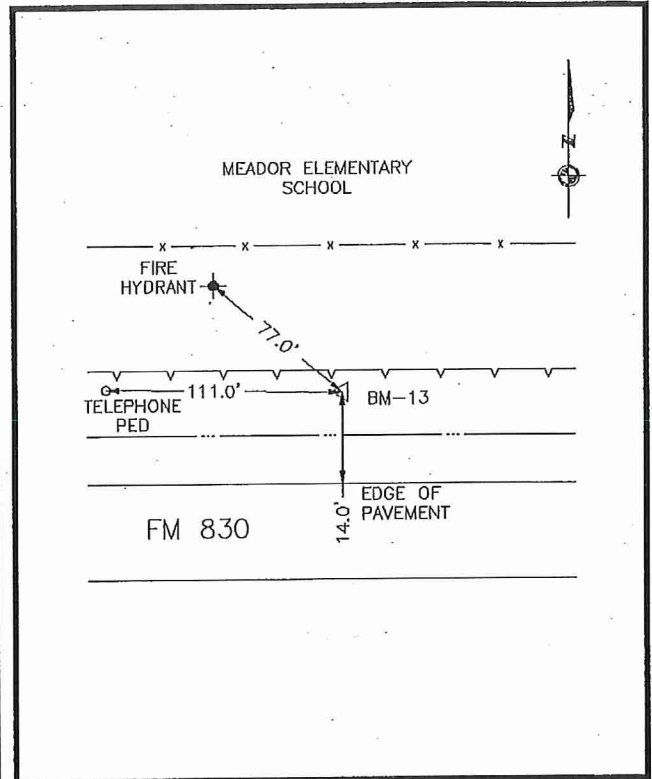


Photo 1-Station Detail:

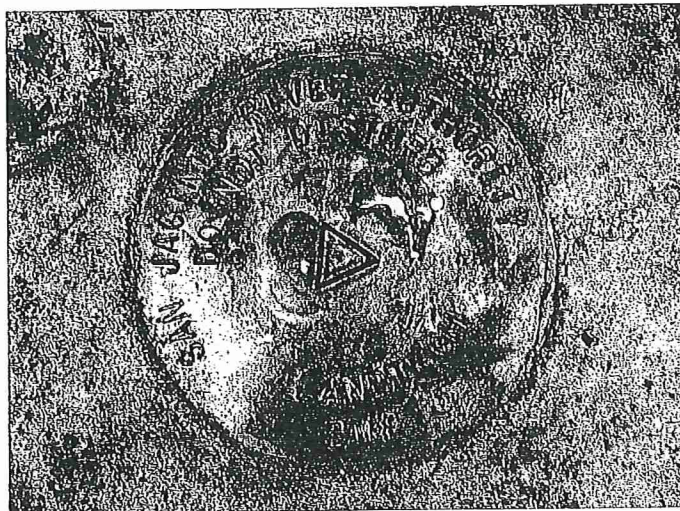


Photo 2-Station Area Picture:

